



Altavida Residence

DocuRemote provides local and remote monitoring of an elderly persons residence



Mission

Altavida is an Elderly residence located in Abanilla (Murcia), however its main office is based in Madrid.

Together with the working staff of the centre, it welcomes elderly people suffering or not from different pathologies and different grades of motor and mental impairment.

Service quality is the main objective of Altavida, in the users attendance as well as in the information providing to the families.

Objective

From the central office, they wanted to implement an outdoor access control to avoid intrusion and indoors to control the areas with access restricted to the residence personnel.

At the same time, they also wanted to install cameras with public IP, so that families could access the residents' common areas and then visualise, in real time, the realised activities and assess the quality of the service provided by the residence.

Solution

Intelis Solutions, distributor of I&IMS video surveillance system, DocuRemote, introduced a project to control accesses and remotely display cameras from an ADSL line for the central office and locally from the IP network of the residence.

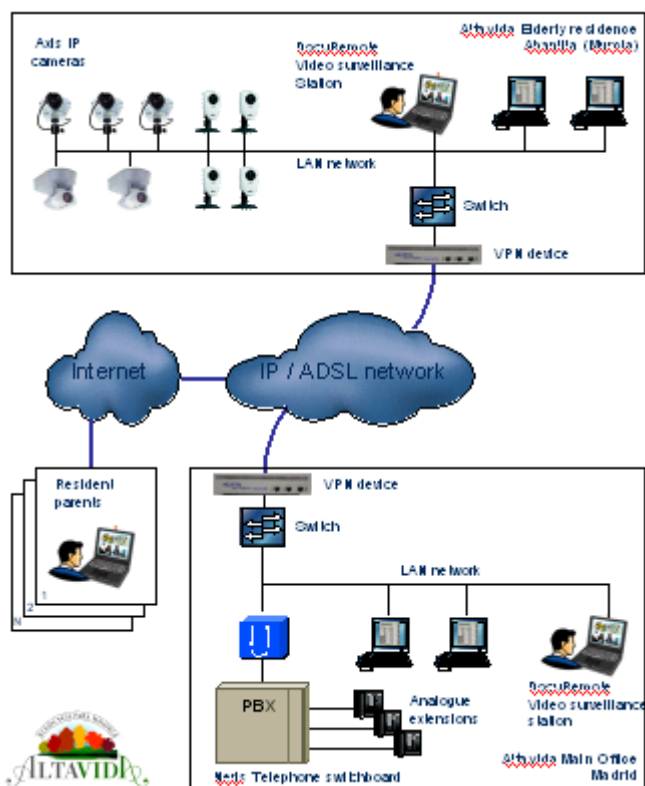
Different Axis IP cameras were installed, in the Altavida Elderly residence, according to the needs:

- Outdoor control:
Axis 2120 camera with protection housing.
- Indoor control:
For common areas observation by families: Axis 2130R PTZ cameras, with programmed itineraries by DocuRemote and configured with public IPs.
To control alleys and restricted access halls: Axis 205 fixed cameras.

The residence was connected to a Telefónica ADSL network via a router. The simultaneous camera management was carried out from the central office via the DocuRemote software.



The component scheme that configures the DocuRemote video surveillance solution for the Altavida residence is as follows:



Company profile

The objective of the Altavida Elderly residence is to be a permanent or provisional home for elderly persons and, as a consequence, to provide an integrated and continuous assistance to its users.

Its aim is to create an environment promoting integration, life and well-being, by answering the home and assistance demands of all its residents.

The main office general policy promotes the following rules: personalised treatment, easy access to any common facilities, participation and promotion of the access to new technology.

Altavida promotes playful activities to improve elderly people's well-being, including physical maintenance, intellectual and cultural entertainment and development.

At the moment, the residence has 127-user capacity, distributed amongst 60 double and 7 single rooms.

Results

The video surveillance system Intelis Solutions proposed, based on I&MS DocuRemote software and Axis IP cameras, successfully implemented a control of outdoor night accesses from the main office, which sends a simultaneous alarm to the residence, in case of intrusion.

Another objective, which was not previously foreseen but was finally covered, is to control the entrance accesses but also the residents' going out off opening hours, as well as their movements within the centre.

The resident's families congratulated the possibility to visualise their parents, since they considered this option as a real quality and guarantee value in the users' care, in comparison with other institutions.

The client

"The control of restricted zones allowed us to reduce mobility in these areas, to monitor the access. Thanks to the DocuRemote software, we can also assess the assistance quality of the staff towards elderly people.", said the Altavida residence manager after the system implementation and use.

