



Cases Group Bakeries

Stocks' control, surveillance and improvement thanks to DocuRemote



The Mission

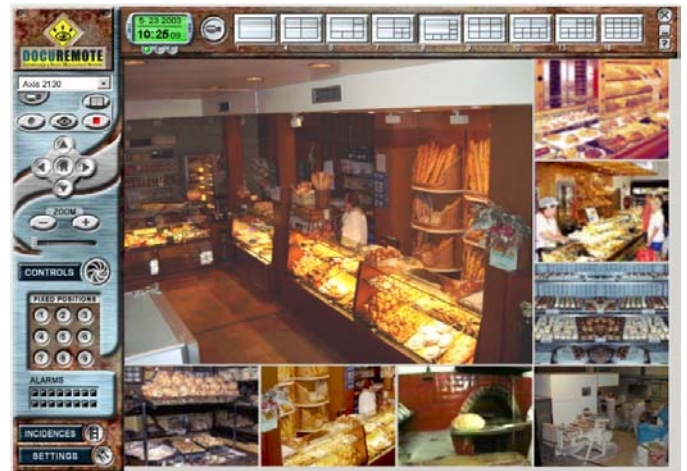
Cases Group, a bread production centre and a chain of bakeries located around Barcelona, in Spain, wanted to optimise the restocking of baked goods in the bakeries and to permanently check on the display cases in the bakeries. The idea was to develop a system that could provide the bakeries with stock management simultaneously without the need for travelling.

The Solution

Cases Group installed one AXIS 2130 in each bakery and two AXIS 2130 and one Axis 2120 in the bread production centre. All bakeries were connected through Telefónica's routers and ADSL lines. The simultaneous management of all cameras was performed from the central offices with the software application DocuRemote by Information & Image Management Systems (I&IMS).

The Result

After three months of operations, the video surveillance system has enabled a 20-% increase of productivity at the production centres and the bakeries. Moreover, Cases Group management has now a tool enabling production quality control of its products and real-time surveillance of food security standards, applicable throughout the production line: from the centre to the bakeries.



The Customer

"I would never imagine this kind of results. I just asked for a stocks control and monitoring system as part of my marketing policy and, only in three months, I am pleased to say that I have got a productivity increase over 20%"

Jordi Cases
General Manager
Cases Group

Company profile

Cases Group is a Catalonian company that has been dedicated to bakery business, for three generations. Nowadays, the company performs the production and selling of bread and other bakery products, as well as the distribution in Spain of specific machinery for this business area (fermentation controlled closets, blast chillers, dispensers, water coolers, automatic lines, exposition showcases, etc.)

An easy-to-use and flexible system

The company was looking for a system allowing them to monitor different locations at the same time, in order to control procurement and showcases. I&IMS' innovative application, DocuRemote, together with Axis network cameras, provided the solution. DocuRemote is a modular application for monitoring and local or remote control of network cameras. It also provides motion detection, alarm management and JPEG-video storage through IP-networks.

The solution provides the users with a unique and functional interface, that is both intuitive and easy to use. *"Without being an expert user in IT or surveillance, I started to use all the possibilities that DocuRemote offered me very quickly and I managed Axis cameras very easily,"* says Jordi Cases from Cases Group.

High Performances

- Simultaneous monitoring up to 16 remote cameras at a time, amongst up to 128 available ones.
- Automatic activation of the network cameras.
- Intelligent detection of dynamic changes
- Expert and automatic activation of the different

- type of alarms: sound, visual, SMS, e-mail and image transmission
- Sequence and incidence monitoring.
- Interactive design of interest areas, where the intelligent detector of incidences works.
- Activity reports performed through an integrated text editor, which also includes marked images of interest



- Multifunctional agenda maintenance (daily, weekly and programmable every day of any year) that permits the regulation of activity detection and intelligent recording of sequences generated by events.

"The AXIS 2130 PTZ camera with movement I installed, combined with DocuRemote let me zoom at any time and have a closer view of areas of my interest," says Jordi Cases.

