

## IP65 INDOORS / OUTDOORS HOUSING PACKAGE



### HOUSING PACKAGE FOR PTZ AND DOMO CAMERAS



#### OVERVIEW

Sphere housing for indoors and outdoors facilities. Its design enables it, enables the camera to camouflage as if it belonged to the normal illumination system, which make the surveillance easier and more discrete in a given area.

This protection housing was designed for the IP PTZ and DOMO Axis camera, like the **Axis 2130R**, the **Axis 213**, the **Axis 214**, the **Axis 231**, the **Axis 232** and the **Axis 233** models. The housing protection level is IP65, meaning that it protects the camera in indoors as well as outdoors settings against dirtiness and rain.

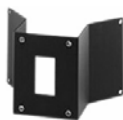
For its outdoor use, the housing integrates a heating and a external protection against the sun, which enables it to resist against temperatures between +30°C and -20°C. This housing offers several mounting set-up possibilities: ceiling, wall, corner or post. Following accessories are necessary:



Wall mount bracket



Ceiling mount bracket  
(922 mm long)



Aluminium adaptor for corner



Aluminium adaptor for post

#### TECHNICAL SPECIFICATIONS

**General:** Body material: black plastic (nylon with added minerals).  
Dome: Tinted or transparent Plexiglas (PMMA).

**Power supply:** 230 V AC, consumption: 44 W

**Environment conditions:** Outdoors / Indoors  
Temperature: -20°C a 30 °C

**Price-list code:** HCA 11P65T  
HCA2IP65A

**Dimensions:** Total height: 325 mm (body height: 213 mm)  
Diameter: 326 mm (dome diameter: 231 mm)

**Protection standard:** IP65: Protection against dirtiness and low-pressure water from any direction.

**For more information on IEC and NEMA protection Standard, go to:**  
<http://www.ims.es/downloads/publicaciones.htm>.

INFORMATION & IMAGE MANAGEMENT SYSTEMS, S.L

Valencia, 279, 7ª planta  
08009 Barcelona (España)  
<http://www.ims.es>



Tel. (34) 93 272 33 00  
Fax (34) 93 487 39 00  
e-mail: info@ims.es