

IP54/IP66 INDOOR/OUTDOOR HOUSING



HOUSING PACKAGE FOR FIXED JVC C20U CAMERA



OVERVIEW

Indoors and outdoors protection housing engineering for the fixed **JVC C20U** IP camera. With an IP66-classified protection for outdoors use, this housing protects the camera against dirtiness and intense rains. For indoors use, the housing offers an IP54 protection which means it protects the camera against dirtiness, direct water dropping from any direction.

The inside temperature of the housing is controlled which enables the camera to be operational under temperatures between +50°C and -20°C. this housing offers several mounting set-up possibilities: ceiling, wall, corner or post. Following accessories are necessary:



Wall mount bracket with ball joint (285 mm long)



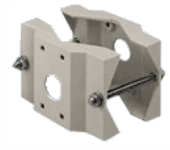
Wall mount bracket with inner cable path and ball joint



Ceiling mount bracket with inner cable path



Corner adaptor for wall mount bracket



Post adaptor for wall mount bracket

TECHNICAL SPECIFICATIONS

General:	Body material: aluminium Brackets: stainless steel	Dimensions:	Indoors: 84 x 140 x 360 mm Outdoors: 175 x 168 x 493 mm
Power supply:	Input: 100-230 V AC, 50/60Hz, Output: 12 V DC, 1A max.	Protection standards:	Indoors: IP54. Protection against dirtiness and water dropping from any direction. P Outdoors: IP66. Protection against dirtiness and water jet.
Environmental conditions:	Outdoors / indoors Temperature: -20°C to +50 °C UIT double heating: up to - 40 °C	Weight:	4,3 kg
Price-list code:	CAR HEG37DO CAR HEG37K1		

For more information on IEC and NEMA protection Standard, go to:
<http://www.ims.es/esp/descargas/publicaciones.html>

INFORMATION & IMAGE MANAGEMENT SYSTEMS, S.L

Valencia, 279, 7ª planta
08009 Barcelona (España)
<http://www.ims.es>



Tel. (34) 93 272 33 00
Fax (34) 93 487 39 00
e-mail:info@ims.es